

## WOODEN ATTIC STAIRWAYS

### THE MODELS:

#### THE SUPERIOR

- 300 lb duty rating
- 350 lb duty rating (Superior Plus)
- 1x5 Frame and Stringer
- 1x6 Tread
- Two Strong Metal Handrails

#### THE ATLAS

- 250 lb duty rating
- 1x4 Frame and Stringer
- 1x4 Tread
- One Strong Metal Handrail

### FEATURES:

- Easily adjustable spring tension
- Full-width continuous hinge
- 1x4 frame between side rails and door panels
- Treads dadoed and nailed into side rails
- High grade, kiln-dried, yellow pine lumber
- Galvanized steel hardware with safety edge
- Steel rod under treads
- Safety grooved treads
- Strong steel handrails securely bolted (no splitting or splintering)
- Clear plywood panel

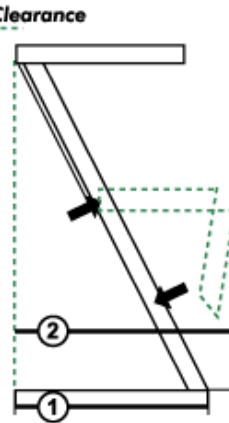
### OPTIONS AVAILABLE:

- [ENERGY SAVER, R-5 ENERGY SAVER & R-10 ENERGY SAVER](#)
- Wide tread (1x5) for extra footing on ATLAS (1x6 is standard on SUPERIOR)
- Insulated door panel
- Pull-down rod with eye hook (shown in inset image)
- FSC certified plywood
- CARB certified plywood
- D-Blaze Fire retardant treated plywood (for more information, see below product image, or [click here](#))



Click to download [INSTALLATION INSTRUCTIONS.](#)

### SPECIFICATIONS:

Model #	Rough Opening	Ceiling Height	Landing Projection (1)	Projection (2)	Clearance
A-75	22½" x 48"	8'2"	54"	65"	
A-80	22½" x 54"	8'9"	58"	67"	
A-81	22½" x 54"	10'0"	66"	77"	
A-90	25½" x 48"	8'2"	54"	65"	
A-100	25½" x 54"	8'9"	58"	67"	
A-101	25½" x 54"	10'0"	66"	77"	
A-102	25½" x 60"	8'9"	58"	69"	
S-80	22½" x 54"	8'9"	59"	69"	
S-81	22½" x 54"	10'0"	67"	79"	
S-100	25½" x 54"	8'9"	59"	69"	
S-101	25½" x 54"	10'0"	67"	79"	
S-200	30" x 54"	8'9"	59"	69"	
S-201	30" x 54"	10'0"	67"	79"	
S-300	30" x 60"	8'9"	59"	71"	
SP-89	22½" x 60"	10'9"	71"	83"	
SP-109	25½" x 60"	10'9"	71"	83"	
SP-309	30" x 60"	10'9"	71"	83"	



The Marwin Folding Attic Stairway is designed with the "Pro" Contractor and quality-oriented dealer in mind. All wood components are sourced from high-grade SYP lumber with quality and safety in mind.

### OPTIONAL FIRE RETARDANT TREATMENT:

- The upgraded (9mm) plywood used on our Fire Treated Stairs is treated with D-Blaze fire retardant which meets the UL standards for the designation of FRS Rating. This means that the treatment has met the 30 minute test standards for Flame Spread, Smoke Developed, & Fuel Consumption to achieve the FRS designation by Underwriters Laboratories. The fire retardant treated plywood used in The Marwin Company, Inc. stairways carries a Class I or 'A' rating which is recommended for areas where fire hazards are most severe. Materials with the lowest rate of flame spread (0-25) are classed by all building codes as Class I or 'A'.
- D-Blaze's flamespread characteristics have been tested and approved by the following applicable standards:
  - NFPA Standard No. 255
  - ASTM Standard E-84
  - UL Classified with FR-S Rating

## ALUMINUM ATTIC STAIRWAYS

### MODELS

#### THE TITAN

- 375 lb duty rating
- Aluminum sections
- Heavy duty galvanized steel hard-ware with "Safety Edge"
- Adjustable Foot Support with rubberized foot pads

#### FEATURES:

- Fully assembled and ready to install
- Easily adjustable spring tension
- Full-width continuous hinge
- Complete easy-to-follow installation instructions included
- Solid aluminum rivets at steps for a secure fit
- Pull-down rod with eye hook (shown in inset image)

#### OPTIONS AVAILABLE:

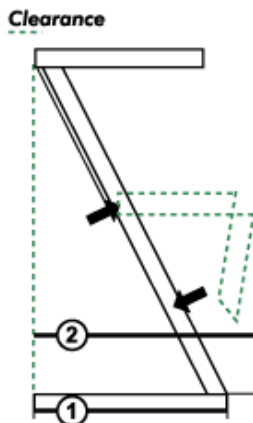
- [ENERGY SAVER, R-5 ENERGY SAVER & R-10 ENERGY SAVER](#)
- Extra-tall available for 10'-12' ceiling height
- FSC certified plywood
- CARB certified plywood
- D-Blaze Fire retardant treated plywood (for more information, see below product image, or [click here](#))



Click to download [INSTALLATION INSTRUCTIONS.](#)

#### SPECIFICATIONS:

Model #	Rough Opening	Ceiling Height	Landing Projection (1)	Projection (2)
T-80	22½" x 54"	8'9"	58"	66"
T-81	22½" x 54"	10'4"	66"	76"
T-100	25½" x 54"	8'9"	58"	66"
T-101	25½" x 54"	10'4"	66"	76"
T-200	30" x 54"	8'9"	58"	66"
T-201	30" x 54"	10'4"	66"	76"
T-2212	22½" x 63"	10'-12'	90"	92"
T-2512	25½" x 63"	10'-12'	90"	92"
T-3012	30" x 63"	10'-12'	90"	92"



THE TITAN

For more durability and strength, these heavy duty aluminum models give extra utility to what is already the best value component in a home—valuable attic storage.

#### OPTIONAL FIRE RETARDANT TREATMENT:

- The upgraded (9mm) plywood used on our Fire Treated Stairs is treated with D-Blaze fire retardant which meets the UL standards for the designation of FRS Rating. This means that the treatment has met the 30 minute test standards for Flame Spread, Smoke Developed, & Fuel Consumption to achieve the FRS designation by Underwriters Laboratories. The fire retardant treated plywood used in The Marwin Company, Inc. stairways carries a Class I or 'A' rating which is recommended for areas where fire hazards are most severe. Materials with the lowest rate of flame spread (0-25) are classed by all building codes as Class I or 'A'.
- D-Blaze's flamespread characteristics have been tested and approved by the following applicable standards:
  - NFPA Standard No. 255
  - ASTM Standard E-84
  - UL Classified with FR-S Rating

ATTIC STAIRWAYS | DOORS & BI-FOLDS | MIRROR DOORS | POCKET DOOR FRAMES | ENERGY SAVING PRODUCTS

STAIRWAY TYPE WOODEN | ALUMINUM | THE ENERGY SAVER | THE R-5 ENERGY SAVER | THE R-10 ENERGY SAVER | **ThermaBLOC**

## ENERGY-SAVER INSULATING PACKAGE

### FEATURES:

- Factory installed ¾" thick, R-5 Rmax aluminum foil faced insulation panel
- Factory applied "Bulb" type, perimeter weather-stripping

### BENEFITS:

- Meets or exceeds the new energy code requirements.
- The Marwin Company "ENERGY-SAVER" insulating package means your stairway is ready to install without any insulating problems or wasted time.
- Our factory applied weather-stripping has the following properties:
  - Helps reduce air leaks and can withstand temperatures of up to 275 degrees Fahrenheit.
  - Assures a proper seal, by remaining pliable, with low memory retention for long lasting service. Other PVC weather-stripping may become stiff and crack or split.
  - Is securely fastened and won't peel off or curl-up like most adhesive backed, field applied, "foam" weather-stripping.

### TO ORDER:

- The Marwin Company "ENERGY-SAVER" insulating package can be easily added to any model stairway. Select any of our Wooden or Aluminum models and ask for the "ENERGY-SAVER" insulating package at the time of order.



**MARWIN  
ENERGY-SAVER**  
(available on any wooden  
or aluminum stairway)

*pull-down rod*  
standard with Energy-Saver

ATTIC STAIRWAYS | DOORS & BI-FOLDS | MIRROR DOORS | POCKET DOOR FRAMES | ENERGY SAVING PRODUCTS

PRODUCT TYPE [ATTIC STAIRWAYS](#) | KNEE WALL ACCESS DOORS | SCUTTLE DOOR SYSTEMS  
STAIRWAY TYPE [ThermaBLOC](#) | ENERGY SAVER | [THE R-5 ENERGY SAVER](#) | THE R-10 ENERGY SAVER

## R-5 ENERGY-SAVER INSULATING PACKAGE

### FEATURES:

- Factory installed certified R-5 RMax insulated door system
- Extra plywood cover to protect the insulation from damage (code requirement in some areas)
- Factory applied "Bulb" type, perimeter weather-stripping
- Taped edges around the insulation to protect and minimize R-value loss

### BENEFITS:

- Meets or exceeds the new energy code requirements
- The Marwin Company "R-5 ENERGY-SAVER" insulating package means your stairway is ready to install without any insulating problems or wasted time.
- Our factory installed insulating panel is more durable and less likely to become damaged. Damaged insulation reduces its efficiency.
- Our factory applied weather-stripping has the following properties:
  - Helps reduce air leaks and can withstand temperatures of up to 275 degrees Fahrenheit.
  - Assures a proper seal, by remaining pliable, with low memory retention for long lasting service. Other PVC weather-stripping may become stiff and crack or split.
  - Is securely fastened and won't peel off or curl-up like most adhesive backed, field applied, "foam" weather-stripping.

### TO ORDER:

- The Marwin Company "R-5 ENERGY-SAVER" insulating package can be easily added to any model stairway. Select any of our Wooden or Aluminum models and ask for the "R-5 ENERGY-SAVER" insulating package at the time of order.



  
Georgia  
Department of  
Community Affairs

Meets the new energy code  
requirement for the state of Georgia



ATTIC STAIRWAYS | DOORS & BI-FOLDS | MIRROR DOORS | POCKET DOOR FRAMES | ENERGY SAVING PRODUCTS

PRODUCT TYPE [ATTIC STAIRWAYS](#) | KNEE WALL ACCESS DOORS | SCUTTLE DOOR SYSTEMS  
STAIRWAY TYPE [ThermaBLOC](#) | ENERGY SAVER | THE R-5 ENERGY SAVER | [THE R-10 ENERGY SAVER](#)

## R-10 ENERGY-SAVER INSULATING PACKAGE

### FEATURES:

- Factory installed certified R-10 Rmax insulated door system
  - Meets the provisions for the IRC Foam Plastic Code
- Heavy duty 3/8" smooth BIRCH plywood
- Extra 1/8" hardboard cover to protect the insulation from damage (code requirement in some areas)
- Factory installed "bulb" type perimeter weather-stripping
- Taped edges around insulation to protect and minimize loss of R-value
- U-factor of .10, R-value of 10 (entire unit)
- Lifetime warranty on our "no sag" coil springs

### BENEFITS:

- Meets the intent of Item 5.3.2 of the ENERGY STAR® Qualified Homes. Version 3, Thermal Enclosure System Rater Checklist
- The Marwin Company "R-10 ENERGY SAVER" insulating package means your stairway is ready to install without any insulating problems or wasted time.
- Our factory installed insulating panel is more durable and less likely to become damaged. Damaged insulation reduces its efficiency.
- Our factory applied weather-stripping has the following properties:
  - Helps reduce air leaks and can withstand temperatures of up to 275 degrees Fahrenheit.
  - Assures a proper seal, by remaining pliable, with low memory retention for long lasting service. Other PVC weather-stripping may become stiff and crack or split.
  - Is securely fastened and won't peel off or curl-up like most adhesive backed, field applied, "foam" weather-stripping.
- Helps meet the following LEED categories:
  - Energy and Atmospheric credit 2.2 (Enhanced Insulation Exceeds IECC by 5%)
  - Energy and Atmospheric Credit 3.1 (Minimal Envelope leakage)

### TO ORDER:

- The Marwin Company "R-10 ENERGY SAVER" insulating package can be easily added to any model stairway. Select any of our Wooden or Aluminum models and ask for the "R-10 ENERGY SAVER" insulating package at the time of order.



## ThermaBLOC®

Utilizes an NFRC rated and ENERGY STAR® Qualified (in the vertical application) door and exterior grade weather-stripped jamb system.

## ATTIC STAIRWAYS

### FEATURES:

- 2 1/4" thick insulated R-10 door
- U-Factor of .10, R-Value of 10.0 (entire unit)
- Incorporates Q-Lon smoke rated weather-stripping
- Exterior grade door frame
- 350 lb duty rating (Wood Models)
- 375 lb duty rating (Aluminum Models)
- Meets the new energy code requirement for the state of Georgia

### BENEFITS:

Helps Meet the following LEED Homes credit categories:

- Energy and Atmosphere Credit 2.2 (Enhanced Insulation Exceeds IECC by 5%)
- Energy and Atmosphere Credits 3.1 (Minimal Envelope Leakage)
- Meets the requirements (R-10 unit) for the ENERGY STAR® Thermal Enclosure System Rater Checklist, Item 5.3.2 for qualified homes.

Click to download [INSTALLATION INSTRUCTIONS.](#)

### SPECIFICATIONS:

#### WOOD MODELS

Model #	Rough Opening	Ceiling Height	Landing (1)	Projection (2)
TBW-80	22½" x 54"	8'9"	61"	70"
TBW-81	22½" x 54"	10'0"	69"	81"
TBW-89	22½" x 60"	10'9"	73"	85"
TBW-100	25½" x 54"	8'9"	61"	70"
TBW-101	25½" x 54"	10'0"	69"	81"
TBW-109	25½" x 60"	10'9"	73"	85"
TBW-200	30" x 54"	8'9"	61"	70"
TBW-201	30" x 54"	10'0"	69"	81"
TBW-309	30" x 60"	10'9"	73"	85"

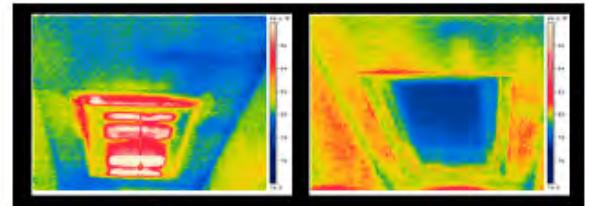
#### ALUMINUM MODELS

Model #	Rough Opening	Ceiling Height	Landing (1)	Projection (2)
TBA-80	22½" x 54"	8'9"	60"	68"
TBA-81	22½" x 54"	10'4"	68"	78"
TBA-100	25½" x 54"	8'9"	60"	68"
TBA-101	25½" x 54"	10'4"	68"	78"
TBA-200	30" x 54"	8'9"	60"	78"
TBA-201	30" x 54"	10'4"	68"	78"



**ThermaBLOC®**

pull-down rod standard with ThermaBLOC



**BEFORE**  
(with standard attic door)

**AFTER**  
(with **ThermaBLOC®** door)

